

DISCOVER RETRO RANCH AT GREEN FRONT

The Look:

A minimalist's dream, "Retro Ranch" creates a rugged, almost gritty, ambience broken up with key warm details and lighter accent pieces. While this style celebrates exposed beams and other structural details, keep things from becoming overpowering with softer, decorative displays, such as stacks of books, vintage artwork or hand thrown ceramics.

With a distinctly masculine, no fuss air, "Retro Ranch" combines mid-century inspired design elements with classic ranch house composition.

1. Nuevo Lighting

The Atom 10 pendant light fixture from Nuevo brings the full impact of the 60s influenced style to an unforgettable focal point. With an unmistakable chic yet futuristic vibe, this breathtaking fixture brings together each element of the Retro Ranch look and finishes the room perfectly.

2. White Brazilian Cowhide

Head to Green Front's Building 1 to see more like this gorgeous hide. Soft yet durable, this piece can work as pictured, as a rug, and is also available in black, brown and brindle.

3. Low Profile Sofa

Sofas like this sleek mid-century style beauty can be found in Building 6. Its clean lines and chic gray upholstery add just the right level of sophistication to the otherwise low-key rugged feel of a ranch-style room.

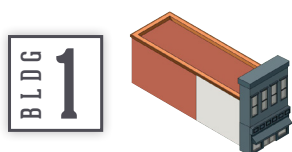
4. Nuevo "Artemis" Chair

Available in Building 6, this stunning chair from Nuevo combines the drama of a sculptural retro piece with the gorgeous elegance of black leather.

5. District Eight Bar

These clean lines and minimalistic styling can be seen on the first floor of Building 6. This bar from Nuevo's District Eight line blends function with clean, modern design.

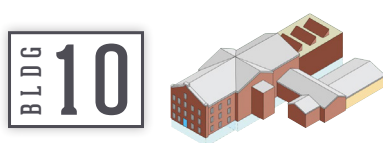
FIND RETRO RANCH AT GREEN FRONT



Building 1 is not only the home of stunning sheep and cowhides from both Brazil and Argentina, it is also where you'll find reclaimed teak and live edge furniture, as well as high-end statement rugs and decorative imported pieces from India.



A must-see for any Green Front visitor, Building 6 takes things in a more modern, contemporary direction, mixed in with more traditional styles. Here you'll find lots of contemporary and mid-century modern pieces from industry leaders such as Nuevo and District 8. It's also a great stop if you're looking for industrial style accents or anchor pieces.



From the winding pathways of the basement to the craftsman heights of the third floor, Building 10 is an exciting and varied stop on your journey. You'll find more mid-century pieces, like the Keno Bros piece featured here, as well as glean inspiration from our GF District display on the first floor.



At Building 15 you'll find the finishing touches and more more. From accent lighting to decorative pieces, this is the place to find any accessory you need.

Visit www.greenfront.com/retroranch for design tips!